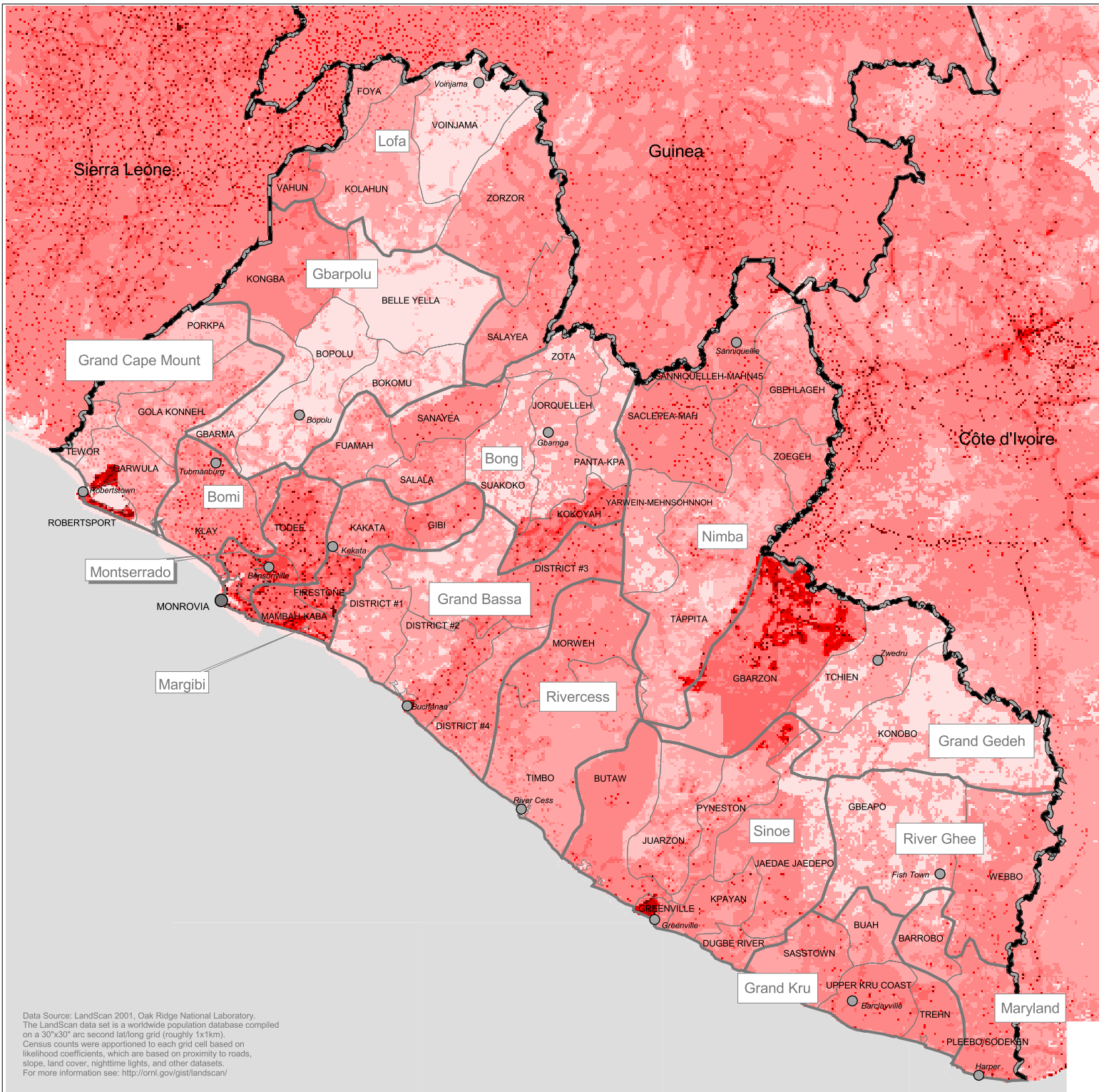


Distribution of Population in Liberia



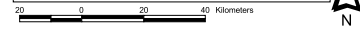
Legend

- Capital
- County Capital
- ▬ International Boundary
- ▬ County Boundary
- ▬ District Boundary

Population per sq km

<1
1 - 2
3 - 10
11 - 50
51 - 100
101 - 200
201 - 300
301 - 400
401 - 500
501 - 600
601 - 800
801 - 1000
>1001
No Data

■ Ocean



Boundaries depicted do not represent official endorsement by the Government of Liberia or by the United Nations. Many boundaries were derived from small scaled maps and will be updated as soon as better information is available. Version 1.0.0., 07/10/2003

Data Source: LandScan 2001, Oak Ridge National Laboratory. The LandScan data set is a worldwide population database compiled on a 30"x30" arc second lat/long grid (roughly 1"x1km). Census counts were apportioned to each grid cell based on likelihood coefficients, which are based on proximity to roads, slope, land cover, nighttime lights, and other datasets. For more information see: <http://ornl.gov/gist/landscan/>

HIC Liberia
 hic.liberia@undp.org
 www.humanitarianinfo.org
 UNDP Building 1st floor
 Simpson Bld.
 P.O. Box 0274
 Mamba Point
 Monrovia, Liberia

